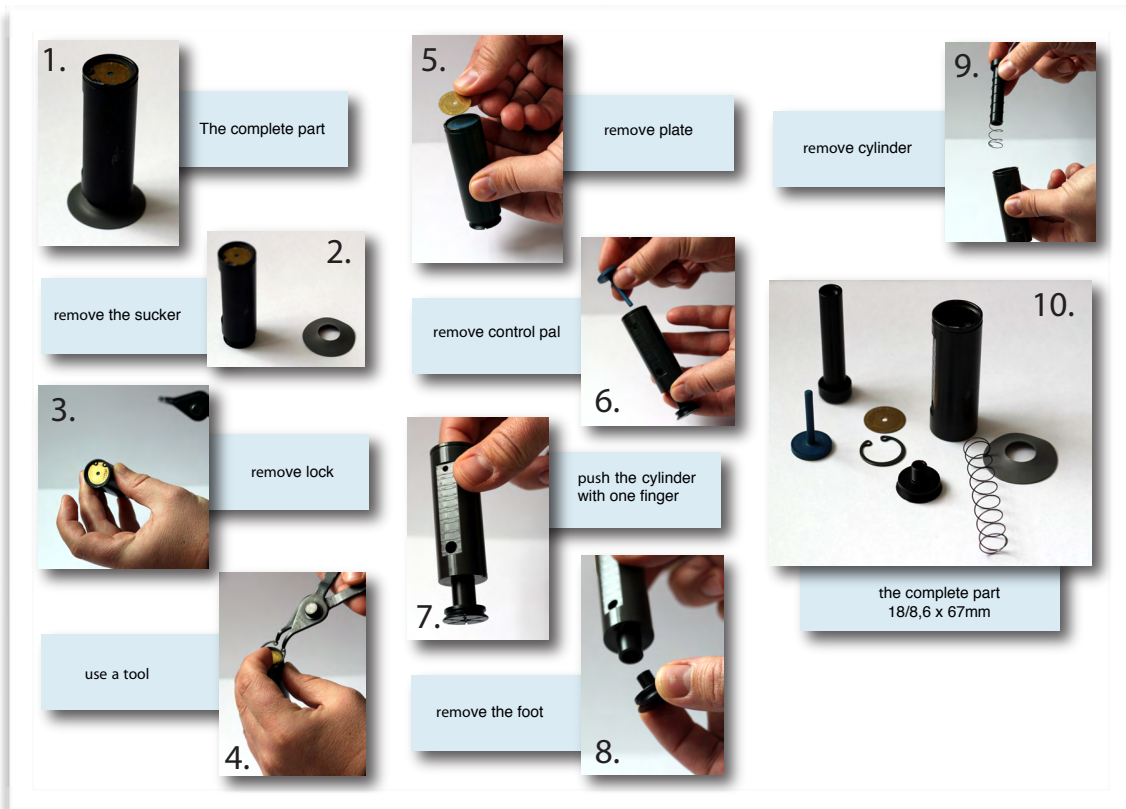
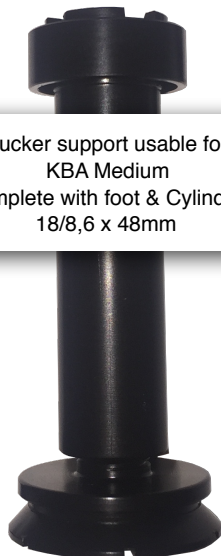


## Parts Usable for KBA Rapida Feeder (made in Denmark)



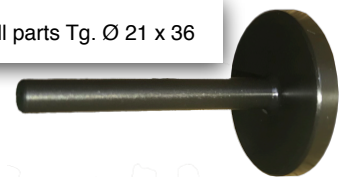
Sucker support usable for  
KBA Large  
(complete with foot & Cylinder)  
18/8,6 x 67mm



Sucker support usable for  
KBA Medium  
(complete with foot & Cylinder)  
18/8,6 x 48mm



Sucker support usable for  
KBA small  
(complete with foot & Cylinder)  
18/8,6 x 24,70mm



Control Pal usable for all parts Tg. Ø 21 x 36



Foot Tg. usable for all  
parts Ø 23 x 15